



WFP-G

An ideal solution for controlling spill light.



“UNIQUE LIGHTING SOLUTIONS”

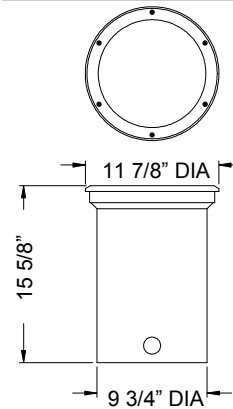
ORDERING

WFP-G-(watt)	(watt) = specified Wattage
-MH	70W-150W Metal halide lamp
-CRI	Color Rendering Index*
-CCT	Correlated Color Temperature*
-CWA	Core and Coil Ballast
-RLEG	Regulated Lag Ballast
-ELEC	Electronic Ballast
-CF	Custom Finish*
-XXX	Ballast Voltage*
-AGS	Anti Glare Shield (internal)
-CL	Colored Lens*
-SL1	Spread Lens (6°)
-SL2	Spread Lens (12°)
-SL3	Spread Lens (30°)
-SPG	Special Glass Pattern*
-AR	Asymmetric Reflector
-FLP	Facade Lighting Package
-SNXX	Snoot in inches (note internal color)*
-PVC	PVC Sleeve

* Consult Factory

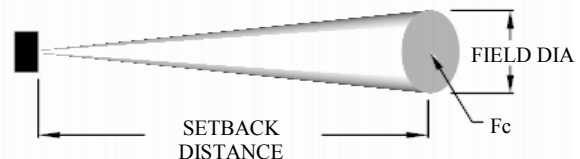
EXAMPLE: WFP-G-150-MH-85-3500-CWA-120-PVC

DIMENSIONS



PHOTOMETRICS

SETBACK DISTANCE (FEET)	Fc AT CENTER	FIELD DIA (FEET)
25	263.1	9.2
50	65.8	18.4
75	29.2	27.5
100	16.4	36.7
125	10.5	45.9



SPECIFICATIONS

Housing– High grade, cast aluminum with a stainless steel ring for complete seal against moisture.

Lamps– 70W to 150W HID. Please contact factory for lamp selections not found on ordering selector.

Lens– Clear, 1/2" thick, tempered glass lens. 6, 12, and 30 degree spread lens are optional, as well as frosted, patterned, or colored.

Reflector– High reflectance, spun aluminum for maximum control of beam. The reflector has an adjustable socket assembly to adjust the beam angle ±15 degrees for field aiming.

Finish– High quality, outdoor, polyester, powder coat.

Ballast– High power factor, core and coil ballast can be either remote or integrally mounted on yoke. Electronic ballasts are also available.

Mounting– Ground mount. A heavy duty PVC sleeve is also available (as shown above).

Weight– Approximately 29 lbs (with PVC sleeve).

Labels– NRTL Listed for wet locations.



WFP-G

An ideal solution for controlling spill light.



“UNIQUE LIGHTING SOLUTIONS”

FILE INFORMATION

Photometric Filename: LLI060501C.IES

Descriptive Information (From Photometric File)

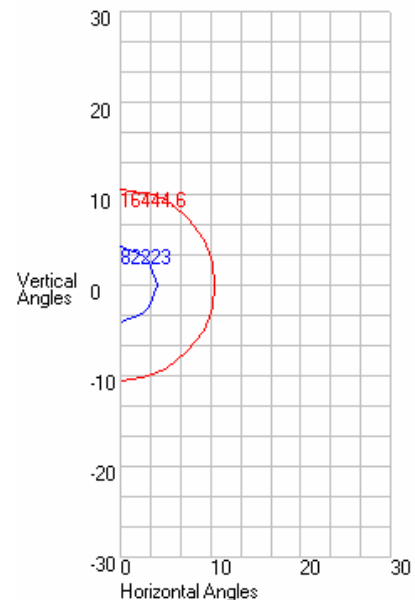
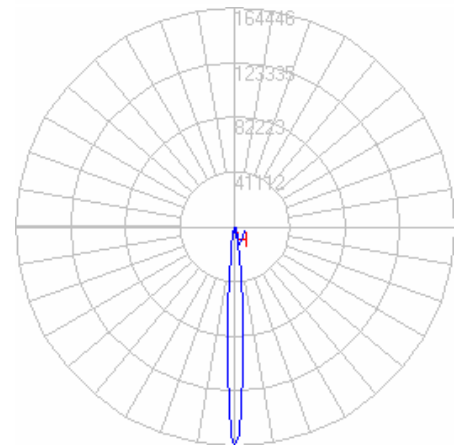
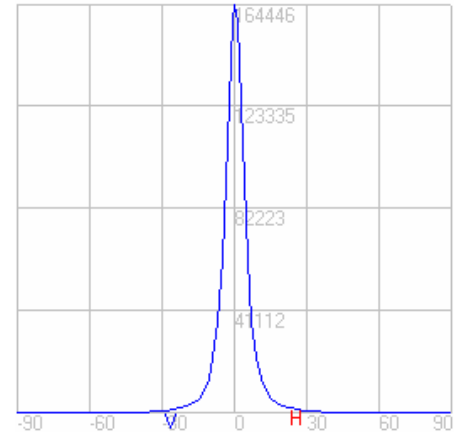
IESNA:LM-63-2002
 [TEST] LLI 0605-01C
 [TESTLAB] LIGHT LABORATORY INC
 [ISSUEDATE] 6/1/2005
 [MANUFAC] ARC LIGHTING SYSTEMS.
 [LUMCAT] HPW-150-MH-85-3000-CWA-120
 [LUMINAIRE] 10-3/8" DIA. X 11-3/4"H. FLOOD LIGHT.
 [MORE] SPECULAR REFLECTOR.
 [MORE] FLAT TEMPERED GLASS LENS.
 [BALLASTCAT] AROMAT M15012CK-3EU-SB1
 [BALLAST] 120V 50/60Hz ELECTRONIC.
 [LAMPPOSITION] 0,0
 [LAMPCAT] PHILIPS CDM150/T6/830
 [LAMPLUM] 13500
 [INPUT] 120V, 167.9W

CHARACTERISTICS

IES NEMA Type	2 H x 2 V
Maximum Candela	164446
Maximum Candela Angle	0 H 0 V
Horizontal Beam Angle (50%)	8.3
Vertical Beam Angle (50%)	8.3
Horizontal Field Angle (10%)	20.8
Vertical Field Angle (10%)	20.8
Total Rated Lamp Lumens	13500
Beam Lumens	1768.11
Beam Efficiency	13.10%
Field Lumens	5005.24
Field Efficiency	37.08%
Spill Lumens	2725.2
Total Lumens	7730.45
Total Efficiency	57.26%

LUMEN MULTIPLIERS

WATT	TYPE	MULT
70	CMH	0.48
150	CMH	1.00





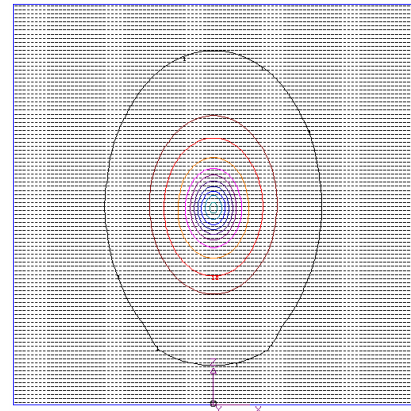
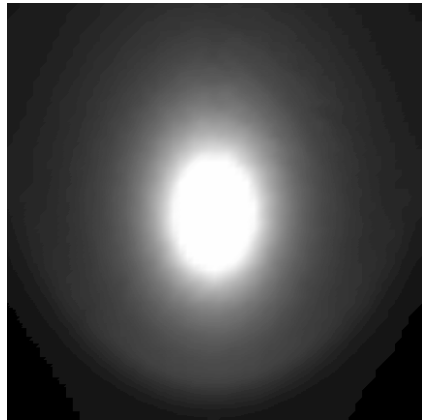
WFP-G

An ideal solution for controlling spill light.

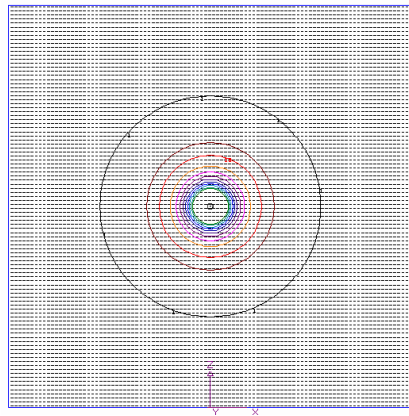


“UNIQUE LIGHTING SOLUTIONS”

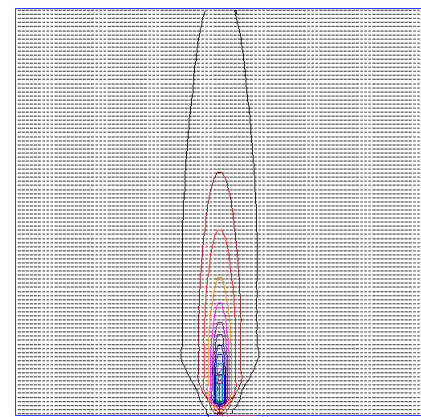
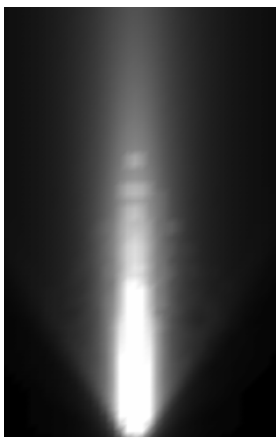
APPLICATIONS



25 FEET FROM SURFACE, 45 DEGREE TILT



25 FEET FROM SURFACE, 90 DEGREE TILT



1 FOOT FROM SURFACE, 180 DEGREE TILT